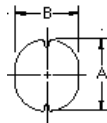


### HPC0403 TYPE

#### TYPE

#### DIMENSION

HPC 0403: 1 $\mu$ H ~ 68 $\mu$ H



A: 4.5 $\pm$ 0.3  
B: 4.0 $\pm$ 0.3  
C: 3.2 $\pm$ 0.3  
D: 1.2 REF

#### SPECIFICATION

ITEM	L	DCR	IDC
HPC0403	( $\mu$ H)	MAX. ( $\Omega$ )	MAX. (A)
1R0M	1.0 $\pm$ 20%	0.049	2.56
1R4M	1.4 $\pm$ 20%	0.057	2.52
1R8M	1.8 $\pm$ 20%	0.064	1.95
2R2M	2.2 $\pm$ 20%	0.072	1.75
2R7M	2.7 $\pm$ 20%	0.079	1.58
3R3M	3.3 $\pm$ 20%	0.087	1.44
3R9M	3.9 $\pm$ 20%	0.094	1.33
4R7M	4.7 $\pm$ 20%	0.109	1.15
5R6M	5.6 $\pm$ 20%	0.126	0.99
6R8M	6.8 $\pm$ 20%	0.132	0.93
8R2M	8.2 $\pm$ 20%	0.147	0.84
100M	10 $\pm$ 20%	0.182	1.04
120M	12 $\pm$ 20%	0.210	0.94
150M	15 $\pm$ 20%	0.235	0.85
180M	18 $\pm$ 20%	0.338	0.74
220M	22 $\pm$ 20%	0.378	0.68
270M	27 $\pm$ 20%	0.522	0.62
330K	33 $\pm$ 10%	0.540	0.56
390K	39 $\pm$ 10%	0.587	0.52
470K	47 $\pm$ 10%	0.844	0.44
560K	56 $\pm$ 10%	0.937	0.42
680K	68 $\pm$ 10%	1.117	0.37

K:  $\pm$ 10% M:  $\pm$ 20%

\* Hong can design any part to your requirements with different inductance.

\* All parameters as this content presented are subject to final specifications both sides confirmed.